



ÚTILES PARA ROSCAR PORTA-FERRAMENTAS

		Zinc fundido zamak	Acero aço	pulgadas medida polegada
Giramachos con crique Desandador com roquete			10	
Giramachos ajustables Desanador ajustável		12	12	
Volvedores Desanador para cossinetes		11	11	10
Prolongador Alongadores de machos		13		



Giramachos con crique

para giro a derecha y izquierda

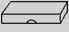
Ejecución completamente de acero

Desandador com roquete

marcha direita e esquerda

execução de aço



No.	for Taps	Square mm	Length mm	Weight kg		Art.-No.
1	M 3-10 1/8-3/8	2.4-5.5	85	0,165	10	10001
2	M 5-12 7/32-1/2	4.5-8.0	100	0,310	10	10002
10	M 3-10 1/8-3/8	2.4-5.5	250	0,250	10	10010
20	M 5-12 7/32-1/2	4.5-8.0	300	0,440	10	10020

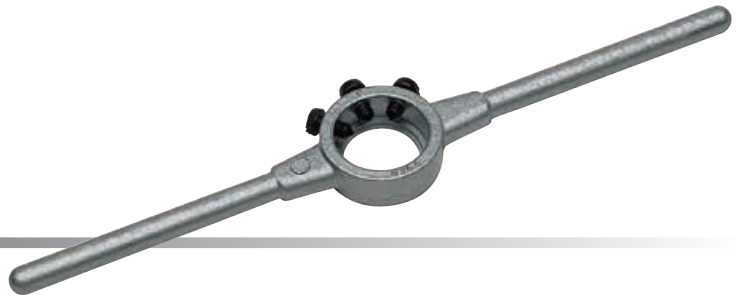
Jaws and Spring for No. 1 und 10	10	10091
Jaws and Spring for No. 2 und 20	10	10092

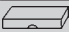
Volvedores

en pulgadas – con 3 tornillos

Desanador para cossinetes

medida polegada com 3 parafusos



Ø	mm	inch/pulgadas	Length mm	Weight kg		Art.-No.
13/16"	20.6 x 6.35	13/16 x 1/4	200	0,060	5	15520
1"	25.4 x 9.5	1" x 3/8	224	0,100	5	15525
1.5/16"	33.4 x 11.1	1.5/16 x 7/16	270	0,180	5	15533
1.1/2"	38.1 x 12.7	1.1/2 x 1/2	315	0,320	5	15538
2"	50.8 x 15.9	2" x 5/8	560	0,900	1	15550
2.1/4"	57.1 x 17.5	2.1/4 x 11/16	560	0,900	1	15557
2.1/2"	63.5 x 19.0	2.1/2 x 3/4	630	1,400	1	15563
3"	76.2 x 22.2	3" x 7/8	900	2,200	1	15576
3.1/2"	88.9 x 25.4	3.1/2" x 1"	900	3,300	1	15588
4"	101.6 x 25.4	4" x 1"	1000	3,600	1	15599

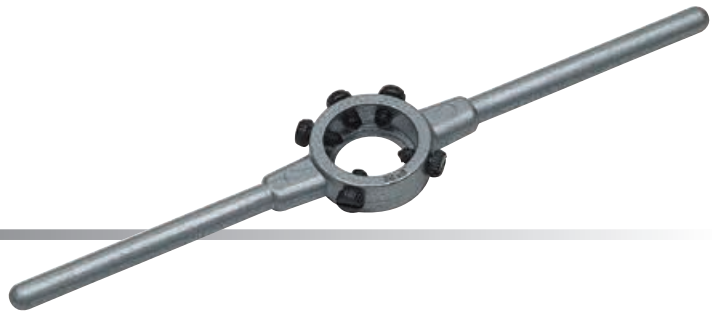



Volvedores

DIN 225 (DIN EN 22568) de zinc fundido

Desanador para cossinetes

DIN 225 (DIN EN 22568), zamak



Ø x mm	for round Dies DIN 223 (DIN EN 22568)		Length mm	Weight kg		Art.-No.	
16 x 5	M	1-2.6	BSW 1/16-3/32	160	0,050	5	15001
20 x 5	M	3-4	BSW 1/8-5/32	200	0,065	5	15002
20 x 7	M	4.5-6	BSW 3/16-1/4	200	0,065	5	15003
25 x 9	M	7-9	BSW 5/16	224	0,105	5	15004
30 x 11	M	10-11	BSW 3/8-7/16	280	0,190	5	15005
38 x 10	Mf	12-15	G 1/4	315	0,340	5	15006
38 x 14	M	12-14	BSW 1/2-9/16	315	0,340	5	15007
45 x 14	Mf	16-20	G 3/8-1/2	450	0,650	1	15008
45 x 18	M	16-20	BSW 5/8-13/16	450	0,650	1	15009
55 x 16	Mf	22-26	G 5/8-3/4	560	0,900	1	15010
55 x 22	M	22-24	BSW 7/8-1"	560	0,900	1	15011
65 x 18	Mf	27-36	G 7/8-1"	630	1,400	1	15012
65 x 25	M	27-36	BSW 1.1/8-1.3/8	630	1,400	1	15013


Volvedores

DIN 225 (DIN EN 22568) **ACERO**

Desanador de cossinetes

DIN 225 (DIN EN 22568), **AÇO**



Ø x mm	for round Dies DIN 223 (DIN EN 22568)		Length mm	Weight kg		Art.-No.	
45 x 18	M	16-20	BSW 5/8-13/16	450	0,650	1	15209
55 x 22	M	22-24	BSW 7/8-1"	560	0,900	1	15211
65 x 25	M	27-36	BSW 1.1/8-1.3/8	630	1,400	1	15213
75 x 20	Mf	38-42	G 1.1/8-1.1/4	800	2,250	1	15214
75 x 30	M	38-42	BSW 1.1/2-1.5/8	800	2,100	1	15215
90 x 22	Mf	45-52	G 1.3/8-1.5/8	900	3,200	1	15216
90 x 36	M	45-52	BSW 1.3/4-2"	900	3,000	1	15217
105 x 22	Mf	54-63	G 1.3/4-2"	975	3,500	1	15218
105 x 36	M	54-63	BSW 2.1/4"-2.1/2"	975	3,500	1	15219
120 x 22	Mf	64-71	G 2.1/4-2.3/4	956	3,170	1	15220
120 x 36	M	64-71	BSW 2.3/4"	956	3,910	1	15221
130 x 25			G 3"	966	3,505	1	15222
130 x 36				966	4,025	1	15223
140 x 22				976	3,620	1	15224
150 x 25			G 3.1/2"	986	3,950	1	15226
160 x 25			G 4"	996	4,115	1	15228

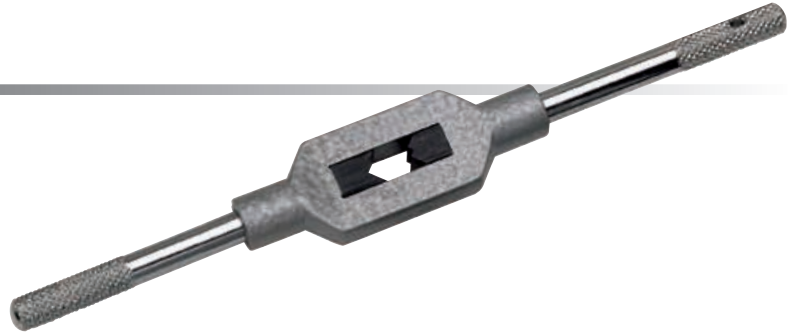



Giramachos ajustables

DIN 1814, de zinc fundido

Desanador ajustável

DIN 1814, zamak, castanha temperada



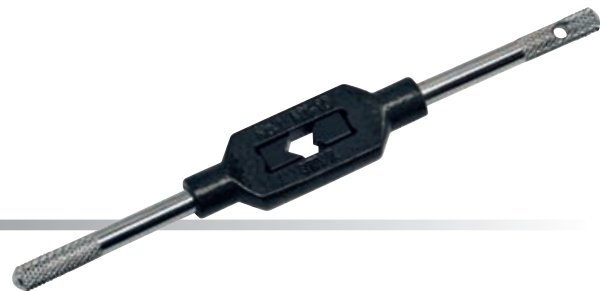
No.	for Taps	Square mm	Length mm	Weight kg		Art.-No.
0	M 1-8 1/16-1/4	2.0-5.0	130	0,050	5	13000
1	M 1-10 1/16-3/8 G 1/8	2.0-6.3	176	0,095	5	13010
1.1/2	M 1-12 1/16-1/2 G 1/8	2.1-8.0	176	0,120	5	13015
2	M 4-12 5/32-1/2 G 1/8	3.0-9.0	280	0,285	5	13020
3	M 5-20 7/32-3/4 G 1/8-1/2	4.9-12	380	0,660	1	13030
4	M 11-27 7/16-1" G 1/4-3/4	5.5-16	505	1,500	1	13040
5 L	M 13-32 1/2 -1.1/4 G 1/4-1"	7-20	700	1,800	1	13050


Giramachos ajustables

DIN 1814, **ACERO**

Desanador Ajustável

DIN 1814, **AÇO**



No.	for Taps	Square mm	Length mm	Weight kg		Art.-No.
0	M 1-8 1/16-1/4	2.0-5.0	130	0,050	5	14000
1	M 1-10 1/16-3/8	2.0-6.3	176	0,100	5	14010
1.1/2	M 1-12 1/16-1/2 G 1/8	2.1-8.0	176	0,120	5	14015
2	M 4-12 5/32-1/2 G 1/8	3.0-9.0	280	0,285	5	14020
3	M 5-20 7/32-3/4 G 1/8-1/2	4.9-12	380	0,660	1	14030
4	M 11-27 7/16-1" G 1/4-3/4	5.5-16	500	1,500	1	14040
5	M 13-32 1/2-1.1/4 G 1/4-1"	7-20	700	1,800	1	14050
6	M 18-42 3/4-1.1/2 G 1/2-1.1/4	11-24	1000	2,600	1	14060
7	M 27-52 1.1/8-2" G 3/4-1.3/4	16-32	1250	4,500	1	14070
8	M 27-64 1.1/8"-3" G 3/4-3"	16-40	1250	4,500	1	14080



Prolongador para machos

DIN 377, cuadrado de anclaje según DIN 10

Alongadores de machos

DIN 377, quadrado conforme DIN 10



Square mm	L1	for DIN 352	Art.-No.
2.1	60	M 1-2.6	14521
2.4	70		14524
2.7	80	M 3	14527
3.0	90	M 3.5	14530
3.4	95	M 4	14534
3.8	100		14538
4.3	105		14543
4.9	110	M 4.5-8	14549
5.5	115	M 9-10	14555
6.2	120	M 11	14562
7.0	125	M 12	14570
8.0	125		14580
9.0	130	M 14-16	14590
10.0	140		14610
11.0	150	M 18	14611
12.0	155	M 20	14612
13.0	165		14613
14.5	175	M 22-24	14614
16.0	180	M 27	14616
18.0	200	M 30	14618
20.0	220	M 33	14620
22.0	220	M 36	14622
24.0	235	M 39-42	14624
26.0	250		14626
29.0	265	M 45-48	14629
32.0	285	M 52	14632